



Navertica Manufacturing ERP

ERP system with expanding functions for manufacturing companies on the Microsoft Dynamics Business Central platform

Microsoft Dynamics Business Central is an integrated ERP system for complex management of organizations (economics, purchasing, warehouses, production, sales, projects, property, etc.).

Navertica Manufacturing ERP (ManuERP) completes the standard Microsoft BC in the form needed by manufacturing companies with the ability to track and evaluate costs per product, manufacturing operation, machine center and/or worker.

The result of ManuERP deployment is smooth and efficient production according to customer requirements.

Among other thingsm ManuERP includes:

- Online accounting of all purchase, production, warehouse and sales transactions
- Online comparison of plan and reality
- Barcode identification
- Use of handling units for mass operations
- Registration of production operations (order, operation, machine center, worker)
- Surface treatments and product packaging
- Management of non-conforming products
- Flexible rules for creating calculations
- Production documentation online
- Service and maintenance of machines, devices and equipment
- Operational and strategic management

Key industry needs

- Two-way linkage between the customer's request and the production order, including purchase requirements
- Specification of the construction / composition of the product using the production bill of materials / recipe
- Specification of work operations using technological procedures
- Planning and ordering the purchase of input materials / parts
- Production planning and control using the production plan and production batches
- Quality control at the start, during the production process and in the shipment of finished products

A manufacturing company must be able to respond flexibly to changes in the number and dates of ordered products, changes in volumes and types of processed materials, and changes in production processes.

The flexibility of a production company means the modification of technological procedures depending on the capacities of the machines, the availability of staff and materials, and the constantly changing demands of customers. In order to maintain and increase competitiveness, manufacturing companies need, in addition to modern technical equipment, also modern software tools supporting all production and business processes.



Microsoft Dynamics 365 Business Central is an integrated system for complex business management, which can be implemented quickly and efficiently if the right methodology is used. It has simple and intuitive controls and anyone can easily learn its principles.

The system makes it possible to respond flexibly to customer requirements and their changes, at the price of acceptable costs. Microsoft Dynamics Business Central connects all employees, processes and information of your organization

The use of the ManuERP vertical solution extends the standard production functions of Microsoft Dynamics Business Central with the possibility of planning and managing purchasing and production according to the received appeals, which are continuously created based on the requests received via the EDI interface.

The use of EDI tools significantly reduces the labor and error rate associated with processing customer requests. Recalls enable the required products and their components to be replenished operatively so that they can be dispatched in the required time and quantity.

The reduction of continuous production times and the high flexibility of change management of the purchase and production plan are ensured by tools for analyzing the use of production capacities and the condition of molds (lifts, planning the use of molds) and quick set-up (cavities and mold multiplicity).

High quality is ensured by the analysis of internal and external non-conformities, including the monitoring of material consumption, machine time, hours worked by individual workers or entire teams in graphic and numerical form.

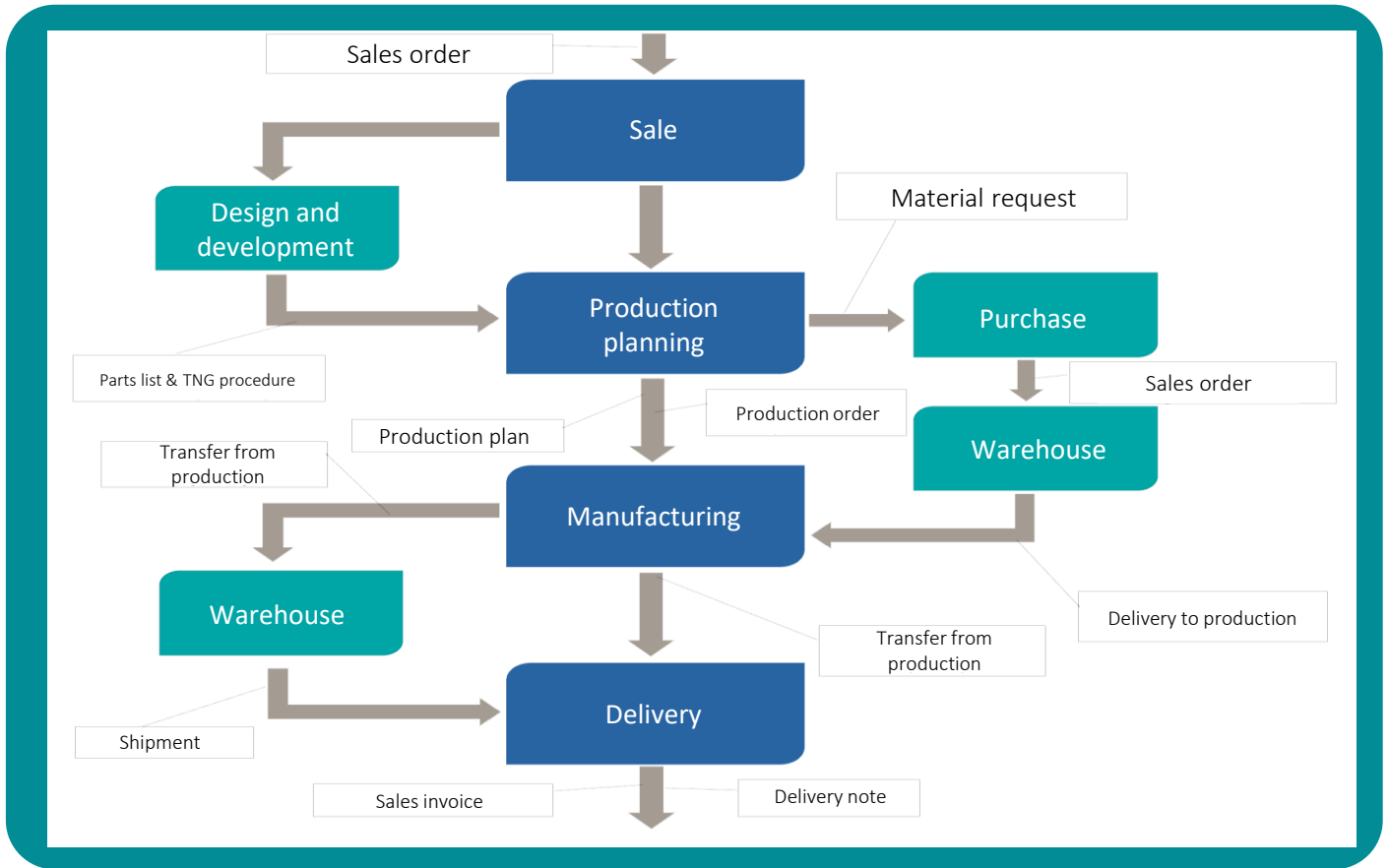
In addition to material planning according to MTP II and advanced resource management, it is possible to count on planned shutdowns for the maintenance of the machine park.

The vertical solution also includes a calculation module that solves the area of production valuation and cost of goods sold calculations. This module can also be used to simulate the cost calculations of an existing or not-yet-produced product.

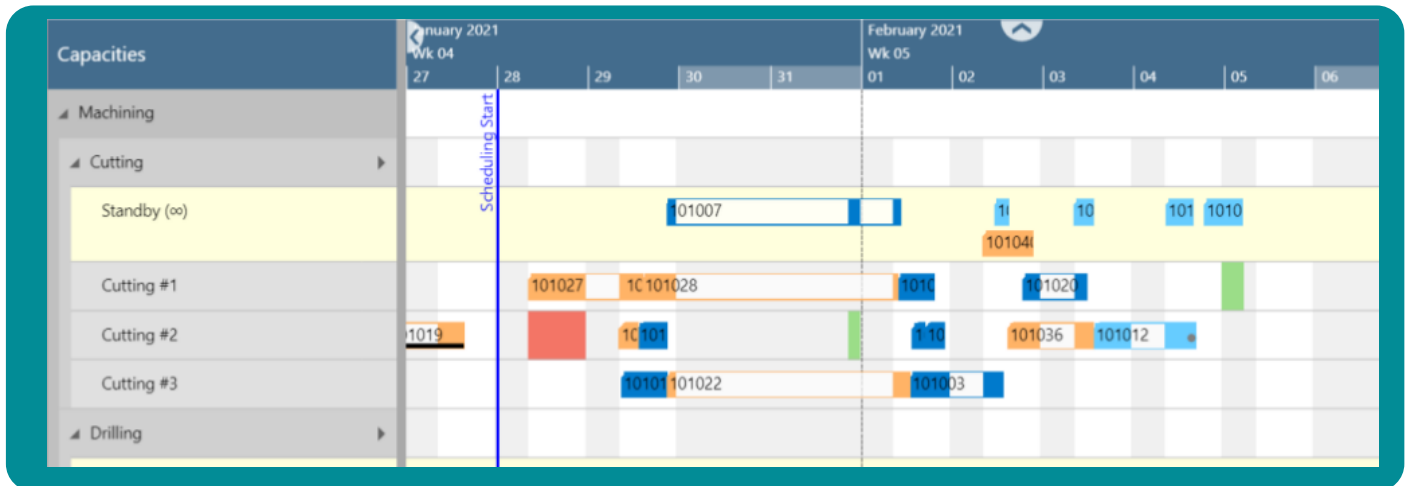
The calculation tool makes it possible to create product cards, bill of materials or technological procedures and to evaluate the planned and actual costs of material, resources, cooperation and overhead, and to analyze individual cost items and their changes over time for the fixed price valuation method.

ManuERP – additional functions:

- Loads and sub-loads
- Appeals and EDI
- Management of cooperations
- Monitoring of production batches
- Reservation of production batches
- Task trays
- Machine center queues
- Alternative machining centers
- Work in progress, inventories
- Graphic display of orders
- Production dispatch
- Work Teams
- Automatic management of workshops
- Work-flow
- Pallet economy
- Types of packaging
- Discrepancy analysis, 8D report
- Revenue analysis, costs and profits
- JIT, ISO 9001, ISO TS 16949



Workshop operations management



With the fine planning application, it is possible to graphically display selected jobs and their operations, and drag-and-drop to move operations in time or between alternative centers in case of overloading of the selected machine center.

This application enables the adjustment of continuous production times according to the delivery date or the adjustment of selected operations, and it is possible to save individual simulated or used plans for later use.

The application can also be used for manual optimization of the production process.

Navertica Manufacturing ERP



During production, the number of errors originating both in manually created paper production documents and their subsequent laborious manual transcribing into the system is significantly reduced. The correctness of recorded production operations and material consumption is ensured by the use of touch screens and barcode readers connected to the system via WiFi.

All data on the production progress is immediately available, so the production manager can react to changes and discrepancies in the production process at any time with the help of the production overview.

The production control allows the store to monitor the progress, so it can inform customers about the status of their orders and any change management or preparation of packaging. This also applies to the subsequent planning of loading and possibly the production of pallets or the preparation of packaging.

Production overview

OPERATL. NO.	STARTING DATE-TIME	ENDING DATE-TIME	SETUP TIME	RUN TIME	WAIT TIME	MOVE TIME
20	1/27/2020 4:04 AM	1/27/2020 9:06 AM	110	12	0	0
30	1/27/2020 9:06 AM	1/29/2020 5:57 AM	15	15	0	0
40	1/30/2020 2:12 AM	1/30/2020 7:42 AM	10	20	0	0
	1/30/2020 7:42 AM	1/30/2020 10:00 ...	10	8	0	0

A high level of production quality and thus low costs for solving internal and external discrepancies is ensured in the vertical solution by managing corrective and preventive measures and creating 8D reports, including statistics of the effects of using these reports. The speed of corrective measures is also ensured by statistical tools analyzing the origins and nature of the identified discrepancies.

The ManuERP system runs on the Microsoft Cloud, which has the highest available level of security in terms of technology, procedures and policies. It can also be run on-premise in compliance with Microsoft's security recommendations.

The system consists of publicly available Microsoft SW licenses, Navertica SW licenses available to everyone on the AppSource electronic market, and any custom modifications made by the supplier for a specific customer, which are his property. The customer is therefore not at risk of so-called "vendor lock-in".

Contact us, we will be happy to become your expert advisor! As a modern, internationally operating and Microsoft certified partner, we will help you simplify and automate business processes. For more than 30 years, we have been operating on the business information systems market and we help improve the economic results of our customers not only in the Czech and Slovak Republics, but also for customers elsewhere in Europe or for customers operating globally.