

Dynamics 365 Business Central Project Management



Have all your projects under control!

No matter which industry your business operates in, whether it be professional services or manufacturing services, we have the solution for your Project Management with a fully integrated end-to-end ERP system, Microsoft Dynamics 365 Business Central.

Effective Project Business Management that integrates finance and purchase inventory in real time.

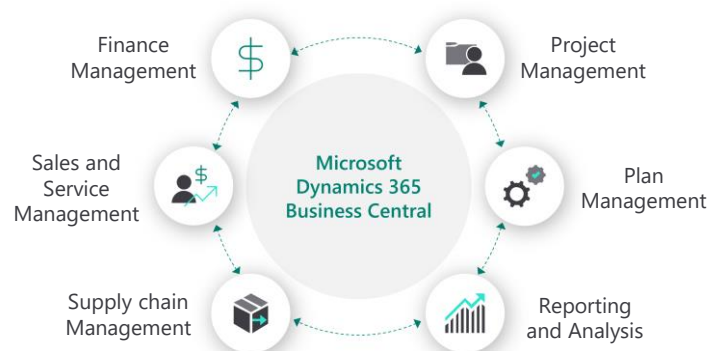
Project management covers the below areas:

- Business and finance management of projects
- Business process management
- Resource capacity management
- Project documentation management
- Project evaluation

Main benefits of Projects Management:

- Overview of actual and planned costs and revenue.
- Overview of project tasks, their status and meeting deadlines. Allocation and tracking of resources.
- Full integration in ERP system, connection to sales, purchase, production, capacity and finance.
- Overview of resource utilization, tracking of consumption in real time.

Link to your businesses!



Project Management



Business and financial management

Every successful project begins with the creation of the project's tasks (to define the scope).

Consequently, we have to add planning lines and task lines to the project to define the costs and revenues.

The planning lines are directly or indirectly connected to the real logistic and financial operations. Those operations are created during the product life cycle.

Project manager is constantly aware of the planned and real finances.

Process Management

Every project involves necessary activities that have to be done in order to accomplish the project. We name these activities Tasks.

Tasks are crucial to plan in real time and connect with the sources (internal or external), that are capacity-limited.

All tasks of the project are connected to each other, and successful completion of each individual task is a prerequisite to achieve the goal in terms of the scope, time and costs. During the product life cycle the project schedule is usually created. The most suitable tool for your project schedule is Microsoft Project, which is part of Microsoft 365.

Once the primary schedule is accepted, the next step is to transfer the project to Microsoft Dynamics 365 Business Central. The schedule is developed in more details and the resources are assigned. The default schedule for the project is created which can be modified and managed later in the project life cycle.

JOB00010 · Předělání recepce areálu

Proces Sestava Ceny & Slevy NV Navigace Projekt Tisk/Odeslat Více možností

Obecné

Číslo úlohy projektu	JOB00010	Osoba odpovědná	MARTINA
Popis	Předělání recepce areálu	Uzavřeno	
Číslo plátce	30000	Změněno dne	01.02.2018
Název plátce	School of Fine Art	Vedoucí projektu	

Úlohy

Číslo úlohy projektu	Popis	Typ úlohy projektu	Počáteční datum	Koncové datum	Rozpočet (celkové náklady)	Aktuální (celkové náklady)	Fakturovatelné (celková cena)	Fakturováno (celková cena)
→ 1000	Fáze 1 - plánování a technické ú...	Od-součet	-	-	-	-	-	-
1010	Poradenství	Účet	22.01.2020	22.01.2020	1 000,00	-	2 000,00	-
1020	Revize a podpis	Účet	22.01.2020	22.01.2020	-	-	-	-
1099	Fáze 1 celkem	Do-součet	-	-	28 620,00	18 220,00	15 031,20	3 000,00
1100	Fáze 2 - Demo	Od-součet	-	-	-	-	-	-
1110	Demolice	Účet	22.01.2020	22.01.2020	22 400,00	18 220,00	3 000,00	3 000,00
1120	Kultivovat cihly	Účet	22.01.2020	22.01.2020	100,00	-	200,00	-
1199	Fáze 2 celkem	Do-součet	-	-	22 500,00	18 220,00	3 200,00	3 000,00
1200	Fáze 3 - instalace	Od-součet	-	-	-	-	-	-
1210	Zdi	Účet	22.01.2020	22.01.2020	3 000,00	-	6 000,00	-

Detaily projektu - poč. cen

Číslo projektu	JOB00010
Zdroj	0
Zboží	0
Finanční účet	0

Detaily projektu

Číslo projektu	JOB00010
----------------	----------

Náklady rozpočtu

Zdroj	27 840,00
Zboží	780,00
Finanční účet	0,00
Celkem	28 620,00

Skutečné náklady

Zdroj	18 220,00
Zboží	0,00
Finanční účet	0,00
Celkem	18 220,00

Project Management



Resource Capacity Management

In Microsoft Dynamics 365 Business Central, it is possible for single and multiple resources which can be assigned to a specific project/s to perform the required task/s and monitor the time and usage per resource, per task.

When you create the job schedule, it is possible to add resources to single/multiple job tasks.

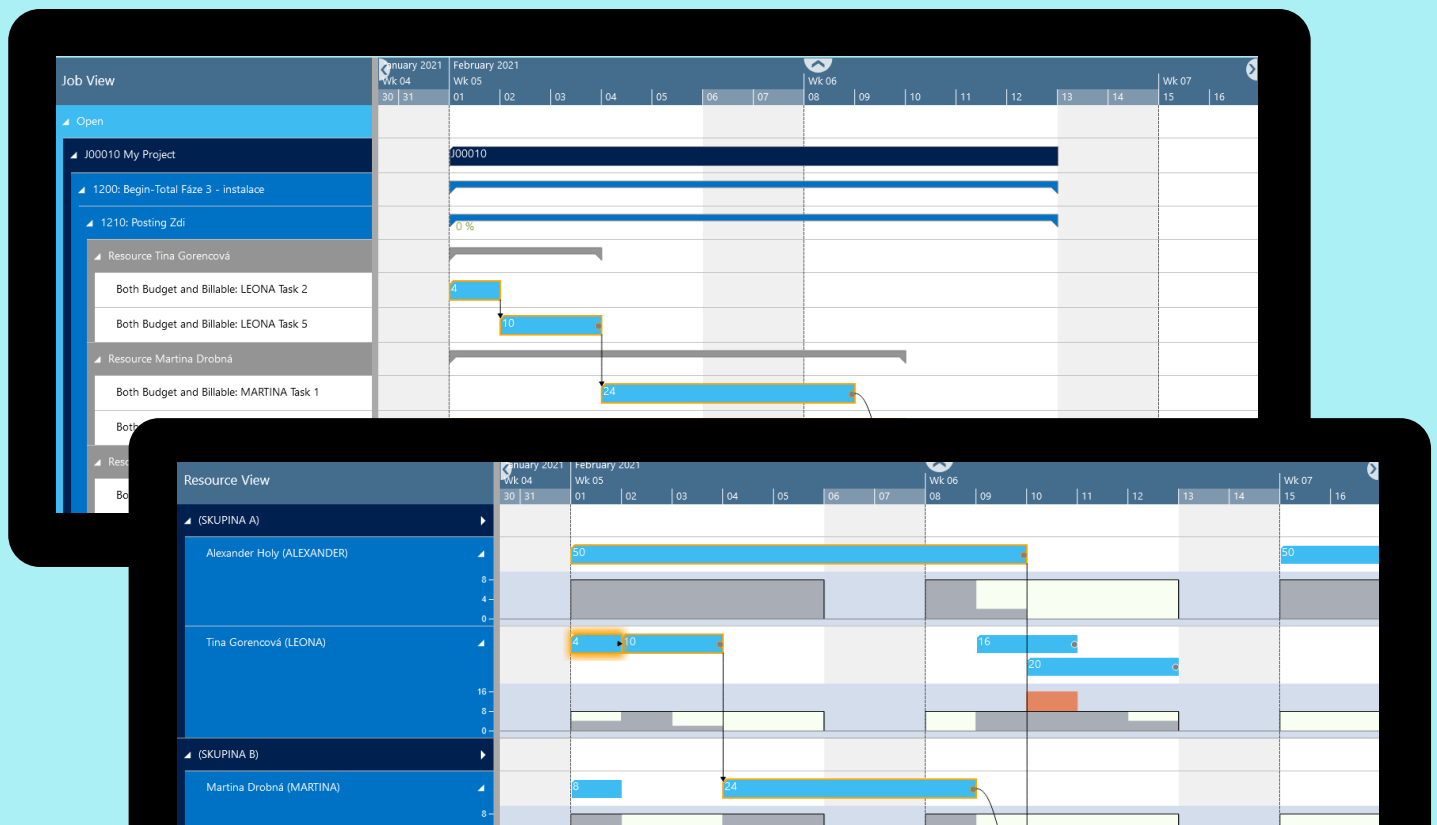
For the Process and Capacity Management of job tasks in real time we suggest the use of the **Visual Jobs Scheduler** extension.

- Drag & Drop job planning lines to change timings (horizontal) or resources (vertical).
- Creation and visualization of interdependence among the project tasks. If you replan the predecessors, you can also replan all successors.
- You can find your bottlenecks thanks to the The Visual Identifier of Capacity resources overloading



Visual Jobs Scheduler (VJS)

VJS is fully integrated extension for Microsoft Dynamics 365 Business Central. It provides you with visual drag and drop capabilities for project and resources planning.



Project Management



Project Logistics Management

The project is an integrated part of the ERP system. By using Microsoft Dynamics 365 Business Central you can manage all business and logistic activities referring to your project.

It is possible to purchase materials as direct costs or as items which has to be stored in warehouse and later can be used in the project. You can also enter the item into production process and later consume these into the project.

You can also easily purchase different services as subcontracts of the project.



Project Document Management

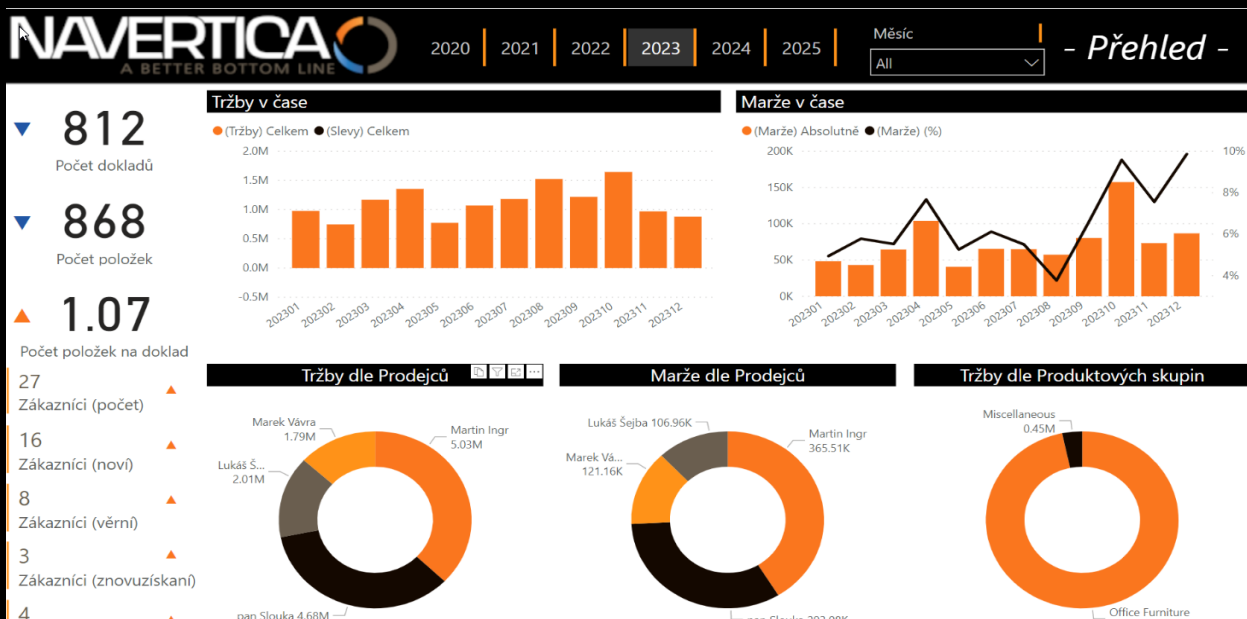
To the job card, it is possible to attach different documents. All important documents are available for everyone assigned to a project in one place in the system.

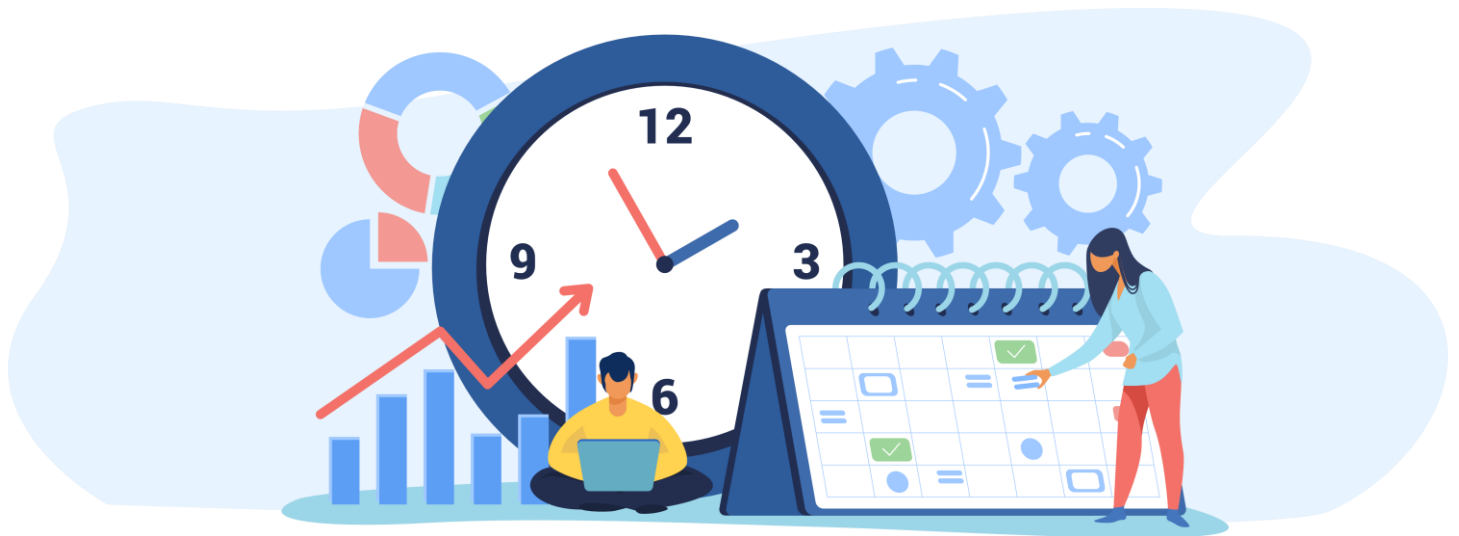
Apart from the simple solution, it is possible to connect Bussiness Central to specialized DM systems e.g. with the Microsoft SharePoint.

Project Evaluation

Apart from the financial overview including planning and real costs and revenues are all transactions archived in entries. There are **job entries**, item ledger entries, resource entries, vendor entries, customer entries etc.

The set of all entries form the basis of the data warehouse. This warehouse serves as data source that you can create various data cubes to further analyse your data with appropriate tool e.g., **Microsoft Power BI**.





Visual Jobs Scheduler

- Struggling to manage your resources efficiently?
- Are you unable to keep promised delivery dates due staffing issues?
- Is the lack of data transparency impeding your success?

Now you can plan and execute your projects with higher precision using visual scheduling.

What is module Visual Jobs Scheduler?

Visual Jobs Scheduler (VJS) is a drag and drop front-end to the standard **Microsoft Dynamics 365 Business Central's Projects and Resources module.**

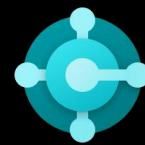
Benefits VJS

- Easy implementation
- Intuitive user interface
- Seamless integration with Business Central
- Immediate data visualization
- Decision making based on relevant data
- Adjustable environment, editable tooltips that helps you to see and use all your data, that are available in Business Central

Functions VJS

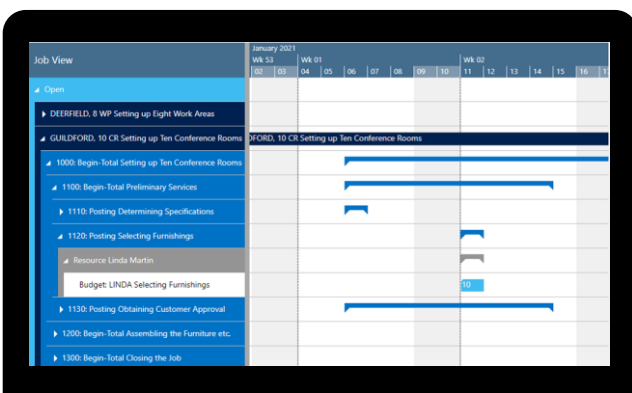
- Integration to projects and resources
- Adjustable filters
- Visual notifications
- Make immediate changes only by dragging your mouse
- Automatic scheduling of successors and predecessors
- Ability to link job planning lines

Project Management & Visual Jobs Scheduler



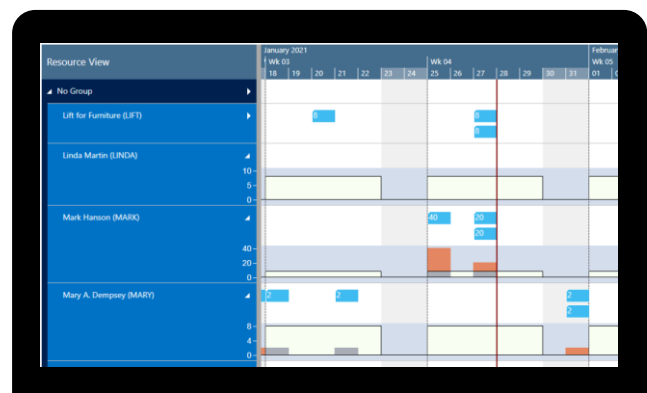
Jobs view

- Visualization of jobs, job tasks, resources and job planning lines
- Drag and drop job planning lines to change timings
- Visual alerts for late job planning lines
- Easily link and split job planning lines



Resource View

- Visualization of the job planning lines assigned to your resources
- Reassign job planning lines to different resources
- Detect bottlenecks
- Visual alerts for overcapacity
- Understand all dependencies



Solution Details

Scope of solution offer: Software, training and consultation services and application of know-how.

Product: Microsoft Dynamics 365 Business Central, Add-On Visual Job Scheduler

Vertical branch classification: Professional services, Construction, Project-oriented companies.

Company size: 1-250 employees.

Price: Contact us.

I am INTERESTED - how should I proceed?

Contact us, we are here for you! - We have been operating in the information systems market for 30 years and have been helped to improve the economic results of our customers not only in the Czech and Slovak Republic, but also for customers in many European countries, South Africa and the USA. We will be happy to help you with the optimization of business processes and business solutions in various branches such as production, trade, services, logistics, project management, and healthcare.

Czech Republic - Brno
Šumavská 15, 602 00, Brno
TEL +420 541 425 911
EMAIL info@navertica.com

Slovakia - Bratislava
Bohrova 1, 851 01
TEL +421 2 68 206 200
EMAIL bratislava@navertica.com

Czech Republic - Praha
Na Okraji 335/42, 162 00
TEL +420 541 425 911
EMAIL paha@navertica.com

South Africa - Sandton
29 11th Ave, Rivonia, 2191
TEL +27 11 234 8833
EMAIL sandton@navertica.com